



FPZ, Inc
 150 N. Progress Drive
 Saukville, WI 53080 - U.S.A.
 Tel. (262) 268-0180
 Fax (262) 268-0415
 E-mail usa@fpz.com

REGENERATIVE BLOWERS - PRESSURE

SCL K04 / K05 / K06

TD SERIES - MOR RANGE

SN 1931-5 1/2

TECHNICAL CHARACTERISTICS

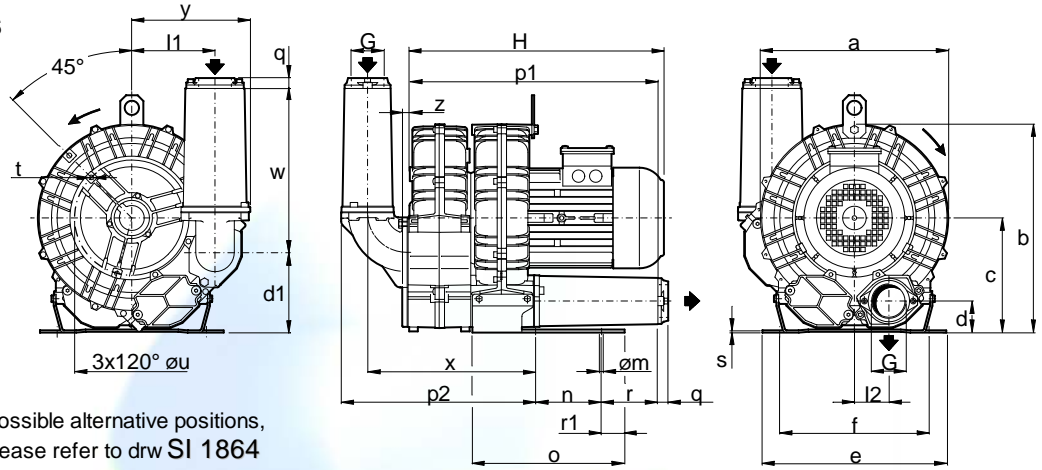
- Aluminium alloy construction
- Smooth operation
- High efficiency impeller
- Maintenance free
- Mountable in any position
- Recognized TEFC - cURus motor

OPTIONS

- Special voltages (IEC 38)
- Surface treatments

ACCESSORIES

- Inlet and/or inline filters
- Additional inlet/outlet silencers
- Safety valves
- Flow converting device
- Optional connectors



Possible alternative positions,
 please refer to drw SI 1864

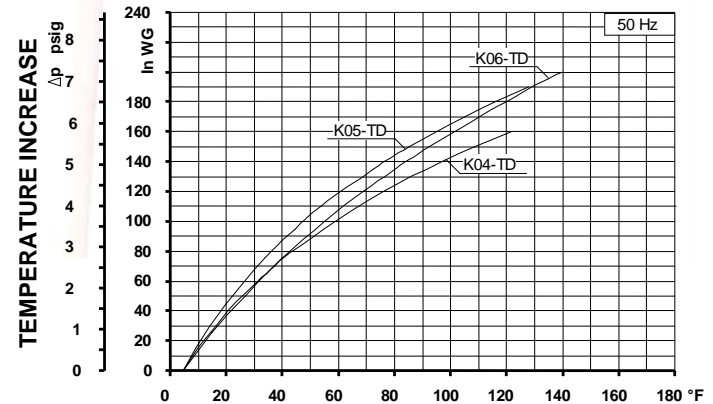
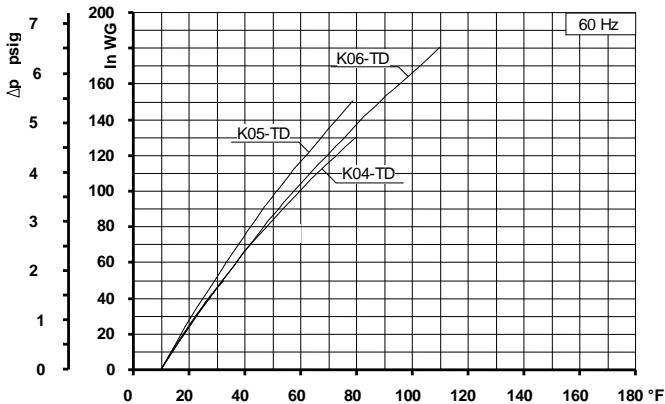
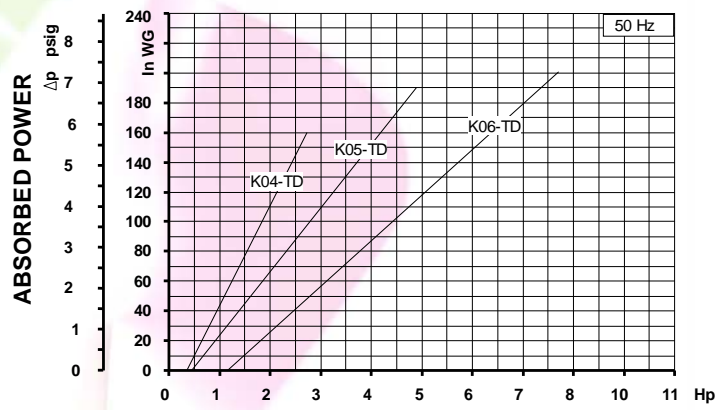
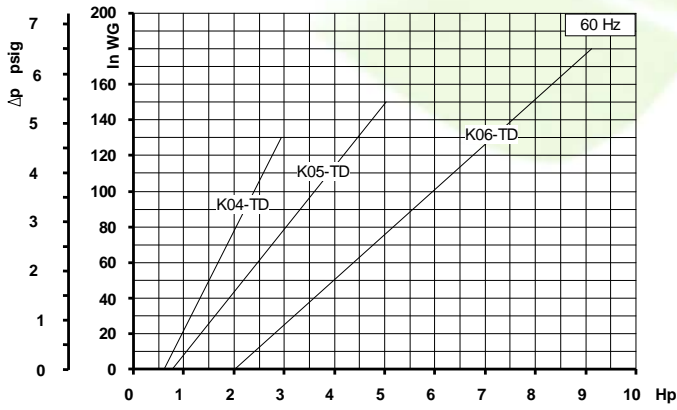
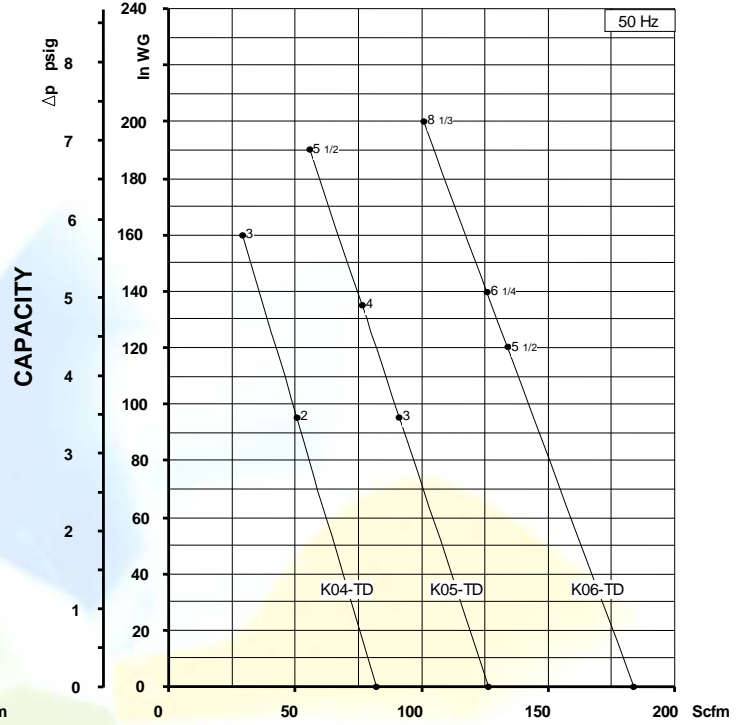
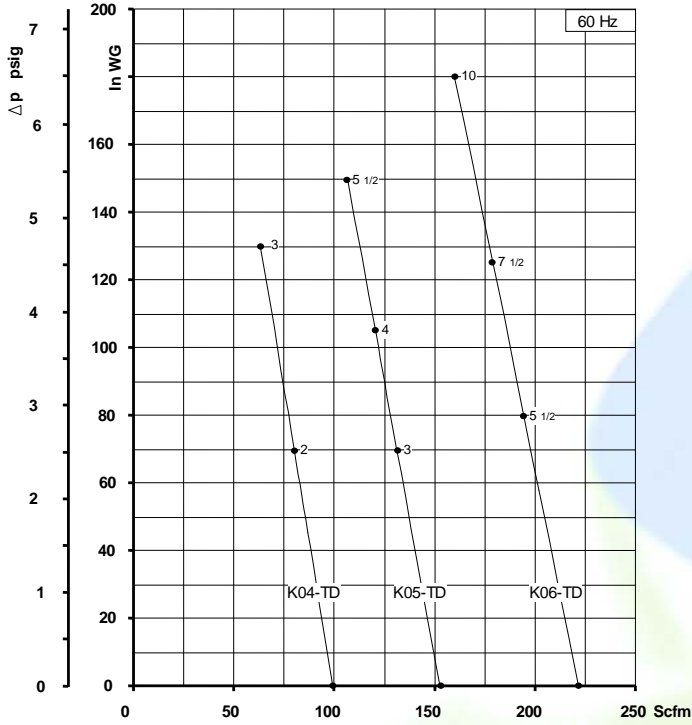
Dimensions in inches.
 Dimension for reference only.

Model	a	b	c	d	d1	e	f	G	l1	l2	m	n	o	p1	p2	q	r	r1	s	t	u	w	x	y	z
K04-TD	11.22	12.40	6.77	1.93	4.76	10.04	8.86	1" 1/2 NPT	4.84	2.01	0.47	3.74	6.73	12.44	10.00	0.71	2.76	0.59	0.16	M6	6.89	7.40	8.43	6.81	0.71
K05-TD	12.87	14.37	7.87	2.13	5.51	12.60	10.24	2" NPT	5.71	2.36	0.59	4.53	10.43	16.85	13.39	0.71	3.86	1.57	0.16	M8	7.87	11.26	11.54	8.11	0.75
K06-TD	14.80	16.54	9.13	2.32	6.69	12.80	11.42	2" NPT	5.94	2.87	0.59	5.51	10.43	19.92	13.94	0.71	5.35	0.75	0.16	M8	9.45	11.26	12.13	8.27	0.75

Model	Maximum flow Scfm		Installed power Hp		Maximum differential pressure Δp (In WG)		Noise level Lp dB (A) (1)		Overall dimensions H Inches	Weight Lbs
	60 Hz 3500 rpm	50 Hz 2900 rpm	60 Hz 3500 rpm	50 Hz 2900 rpm	60 Hz 3500 rpm	50 Hz 2900 rpm	60 Hz 3500 rpm	50 Hz 2900 rpm		
K04-TD	99	82	2	2	70	95	71.0	69.0	17.26	62.83
			3	3	130	160	72.0	70.0	17.26	69.44
K05-TD	153	127	3	3	70	95	73.0	71.0	17.45	84.88
			4	4	105	135	74.5	72.5	18.64	88.18
			5 1/2	5 1/2	150	190	76.0	74.0	18.64	92.59
K06-TD	222	184	5 1/2	5 1/2	80	120	75.0	73.0	18.98	103.62
			7 1/2	7 1/2	125	140	76.0	74.0	22.60	139.99
			10	10	180	200	77.0	75.0	22.60	148.81

(1) Noise measured at 1 m distance with inlet and outlet ports piped, in accordance to ISO 3744.

- For proper use, the blower should be equipped with inlet filter and safety valve; other accessories available on request.
- Ambient temperature from +5° to +104°F.
- Specifications subject to change without notice.



11/10/11	F.P.	Appr.
	Dis.	Confr.
	Data	

5 | Eliminati dati relativi a K03 TD
Rev. Descrizione