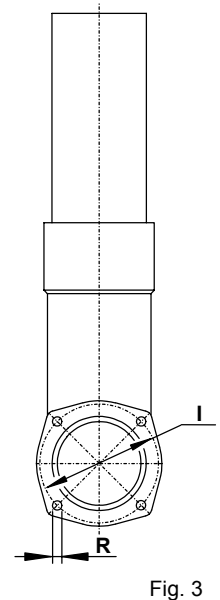
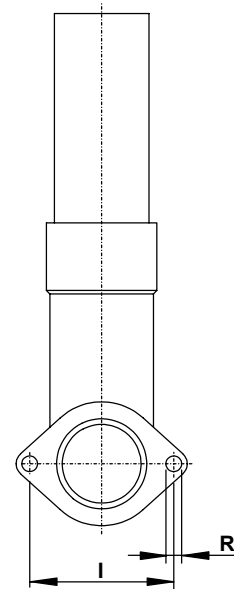
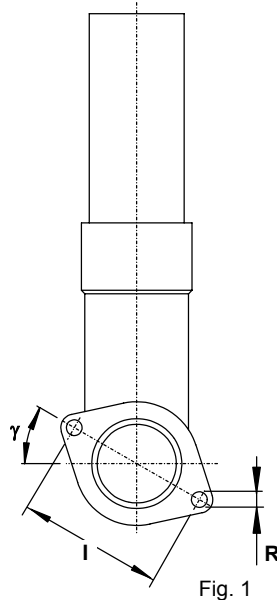
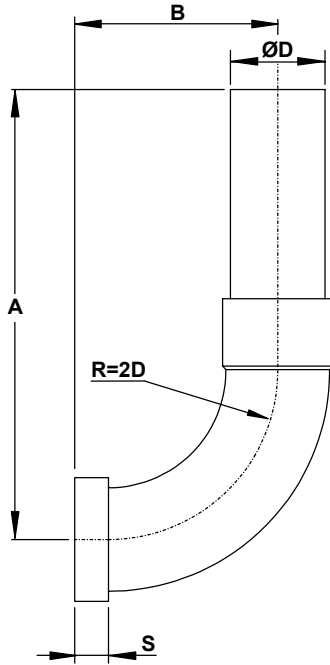




CA MANIFOLD FOR FA/FL FILTERS

90° wide radius PVC manifold with flanged connection and unthreaded tube end. Working temperature $-20^{\circ} \div +40^{\circ}\text{C}$ ($-5^{\circ} \div +105^{\circ}\text{F}$).



TYPE	DN	A	B	D	S	I	R	γ	Fig.
CA 4	1" 1/4	220	90	42	15	75	7	30°	1
CA 4V	1" 1/4	220	90	42	15	64	7	-	2
CA 4K	1" 1/4	260	160	42	15	64	7	-	2
CA 5	1" 1/2	260	110	48	15	85	7	45°	1
CA 5V	1" 1/2	260	110	48	15	75	7	-	2
CA 5K	1" 1/2	300	180	48	15	75	7	-	2
CA 6	2"	320	135	60	15	85	7	45°	1
CA 6V	2"	320	135	60	15	85	7	-	2
CA 8	3"	380	185	88	15	120	7	-	3
CA 9	4"	400	235	113	20	150	9	-	
CA 10	5"	450	300	140	20	210	18	-	

CT MANIFOLDS FOR FLOW CONVERTING VALVES

Alluminum manifold connectors with variable flanges.

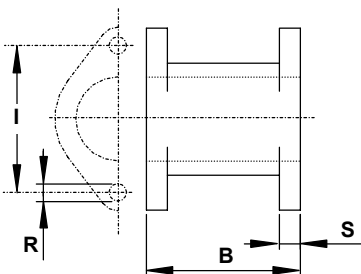


Fig. 4

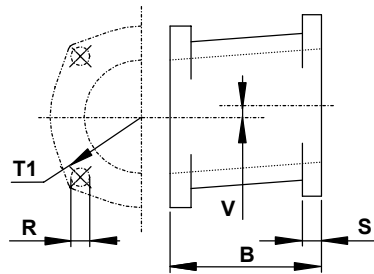


Fig. 5

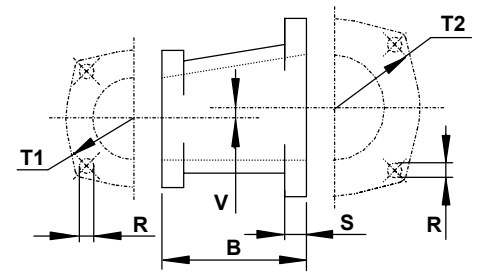


Fig. 6

TYPE	DN	B	S	I	R	T1	T2	V	Fig.
CT 66	2"	60	11	85	7	-	-	-	4
CT 88	3"	65	11	-	7	120	-	9	5
CT 89	3" ÷ 4"	65	11	-	7	120	150	9	6