



**FPZ, Inc**  
 150 N. Progress Drive  
 Saukville, WI 53080 - U.S.A.  
 Tel. (262) 268-0180  
 Fax (262) 268-0415  
 E-mail usa@fpz.com

**FLANGE CONNECTOR FOR VRL VALVES  
 AND FLANGED TUBE CONNECTOR**

**VK / PK**

SN 2048-3 1/2



**VK - FLANGE CONNECTOR FOR VRL VALVES**

The VK accessory allows direct connection of the VRL valve to the "K" series blower cover:

- SCL K-MS useable in either pressure or vacuum modes;
- SCL K-MD useable only in vacuum mode;
- SCL K-TS useable in either pressure or vacuum modes;
- SCL K-TD non applicable.

**CHARACTERISTICS**

Aluminium alloy flange with threaded ports.

Supplied as a kit for mounting (with gasket and screws with spanner), please see the respective Parts List in table.

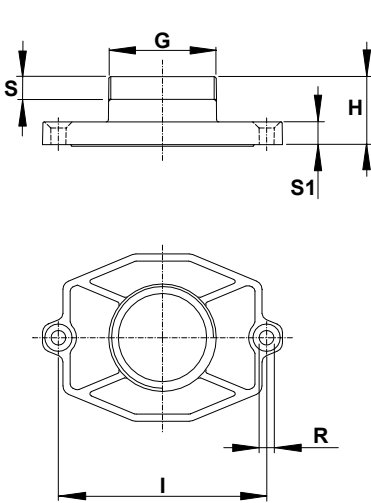


Fig. 1

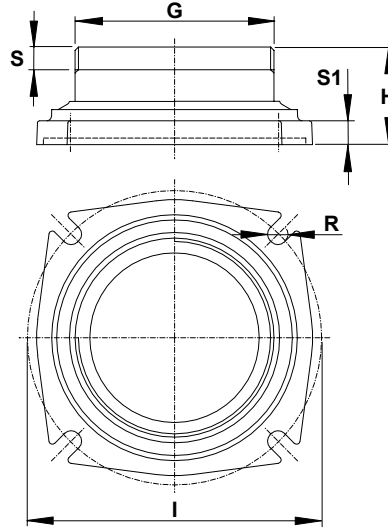
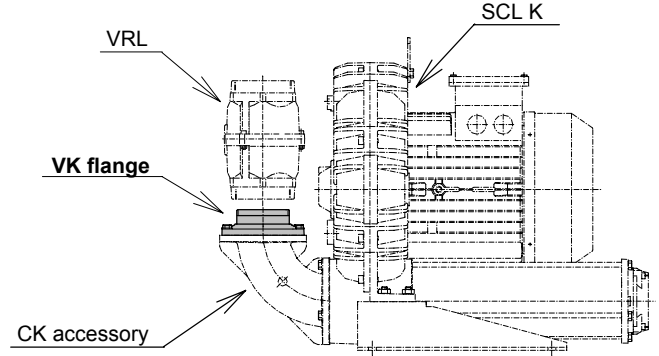
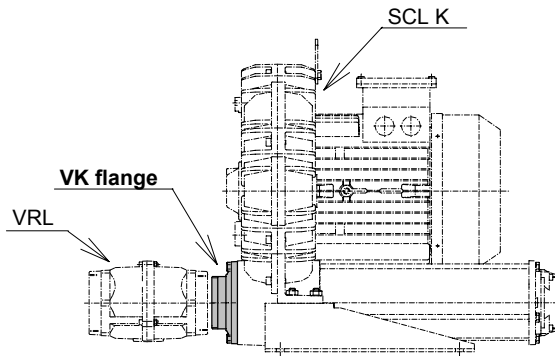


Fig. 2

Dimensions in Inches

| Model | DN     | G          | H    | I    | R    | S    | S1   | Fig. | Parts List |
|-------|--------|------------|------|------|------|------|------|------|------------|
| VK 5  | 1" 1/2 | 1" 1/2 NPT | 1.18 | 3.62 | 0.26 | 0.59 | 0.39 | 1    | SP 1552    |
| VK 6  | 2"     | 2" NPT     | 1.97 | 4.33 | 0.33 | 0.75 | 0.39 |      | SP 1553    |
| VK 6A | 2"     | 2" NPT     | 2.34 | 5.12 | 0.35 | 0.75 | 0.43 | 2    | SP 1611    |
| VK 8  | 3"     | 3" NPT     | 1.69 | 5.12 | 0.35 | 0.83 | 0.43 |      | SP 1554    |
| VK 9  | 4"     | 4" NPT     | 1.81 | 5.90 | 0.35 | 0.90 | 0.43 |      | SP 1555    |





**PK - FLANGED TUBE CONNECTOR FOR SCL K**

The PK accessory allows the direct connection to a flexible hose without the use of the silencer, on the following blowers:

- SCL K-MS useable in pressure or vacuum modes;
- SCL K-TS useable in pressure or vacuum modes;
- SCL K-TD useable in pressure or vacuum modes;

For the SCL K-MD useable only on the cover when used in vacuum mode.

**CHARACTERISTICS**

Flange in aluminium alloy with tube stub connection.

Supplied as a kit for mounting (with gasket and screws with spanner), please see the respective Parts List in table.

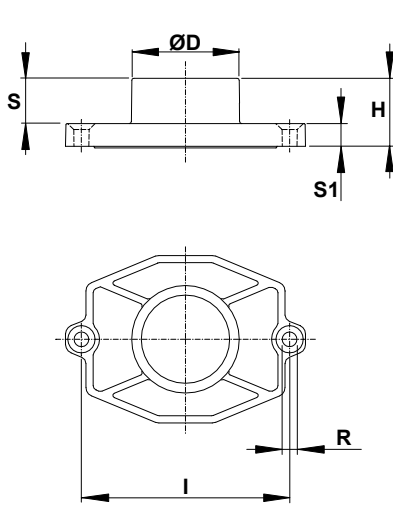


Fig. 1

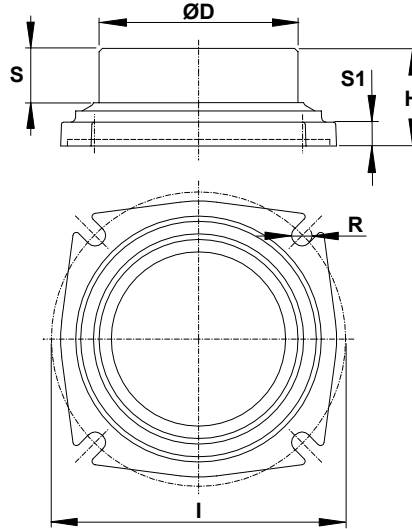


Fig. 2

Dimensions in Inches

| Model | DN     | D    | H    | I    | R    | S    | S1   | Fig. | Parts List |
|-------|--------|------|------|------|------|------|------|------|------------|
| PK 5  | 1" 1/2 | 1.89 | 1.18 | 3.62 | 0.26 | 0.79 | 0.39 | 1    | SP 1543    |
| PK 6  | 2"     | 2.36 | 1.97 | 4.33 | 0.33 | 1.38 | 0.39 |      | SP 1544    |
| PK 6A | 2"     | 2.36 | 2.34 | 5.12 | 0.35 | 1.38 | 0.43 | 2    | SP 1609    |
| PK 8  | 3"     | 3.46 | 1.69 | 5.12 | 0.35 | 0.94 | 0.43 |      | SP 1545    |
| PK 9  | 4"     | 4.48 | 1.81 | 5.90 | 0.35 | 1.06 | 0.43 |      | SP 1546    |

